

# ilifu Policy, Access, Resource Allocation & Support

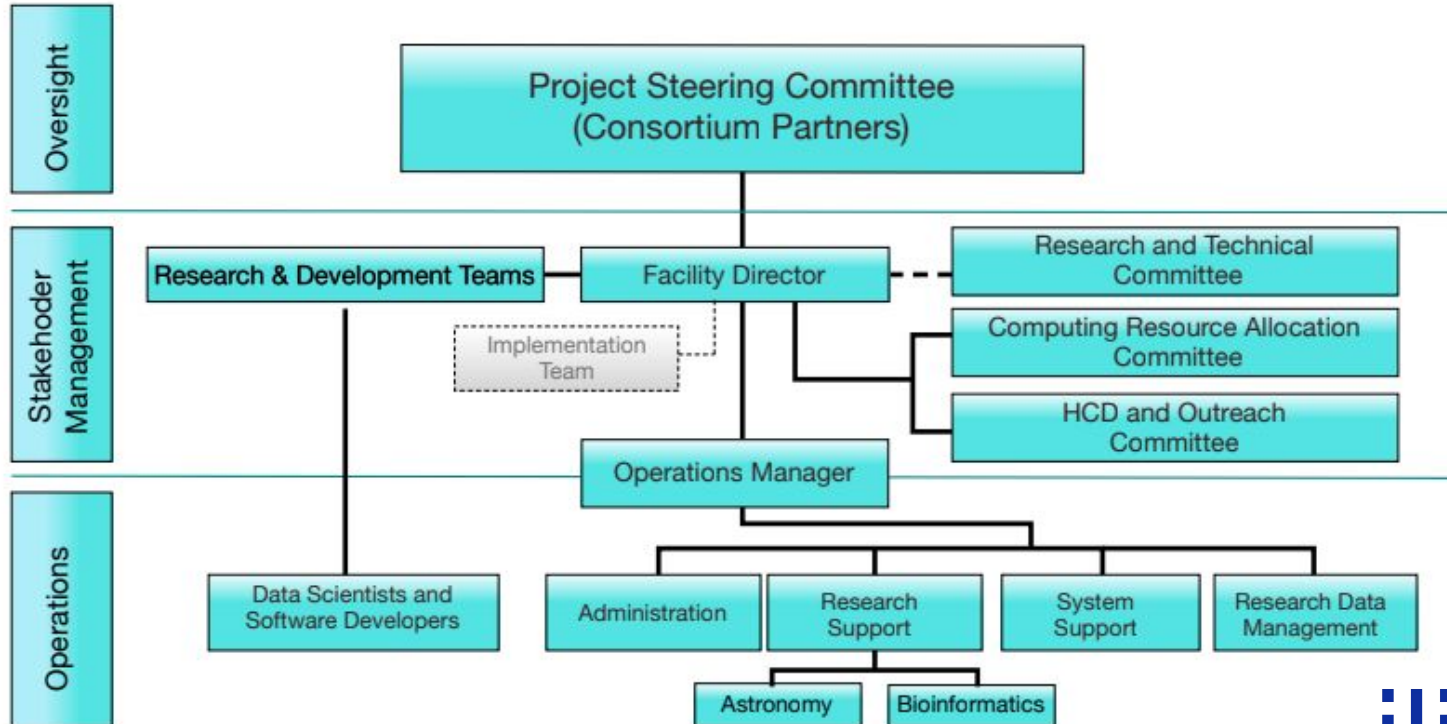
Jasper Horrell  
*ilifu Operations Manager*

ilifu Users Workshop, UWC, 21 Nov 2018

# Content

- Governance
- Equipment Contributions
- Usage Policies
- Gaining Access
- Resource Allocation
- User Support

# Governance



# Governance

- Governed by Consortium formalised under a signed Consortium Agreement
- Consortium: UCT, UWC, SU, CPUT, Sol Plaatje, SARAO
- Consortium was successful in DIRISA funding call for Tier 2 (regional) node
- Overseen by Project Steering Committee
- Run by Facility Director
- Operations Manager reports to Facility Director

# Equipment Contributions

- Computational resources funded by grants from DIRISA and UCT Computational Biology and equipment contribution from IDIA
- Operated as a single facility with resource allocations commensurate with contributions
- User-supplied Equipment Resource Allocation Policy applies

# User-supplied Equipment Resource Allocation Policy



## ILIFU User-supplied Equipment Resource Allocation Policy

### *Introduction*

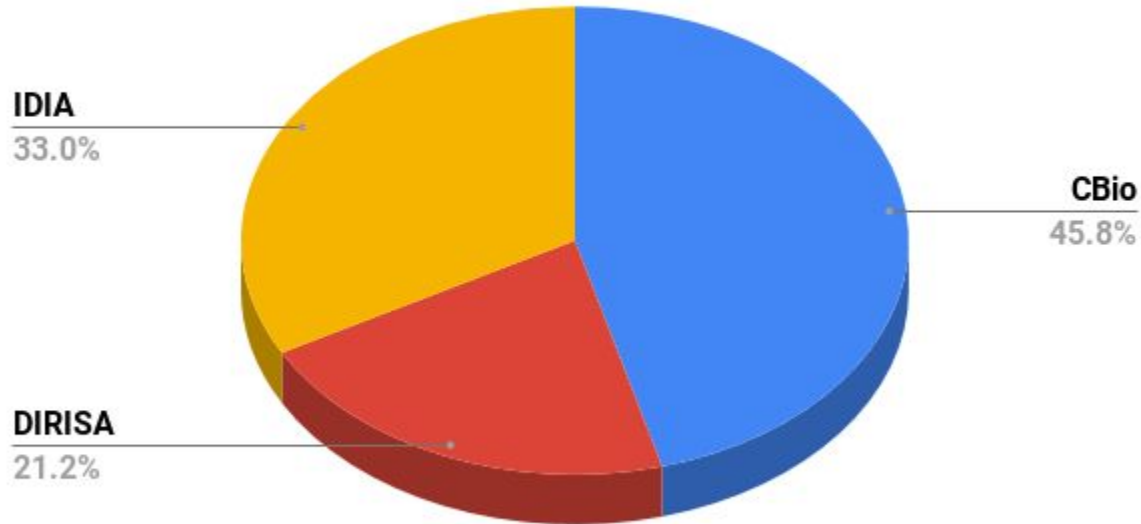
The ILIFU computing equipment is comprised of equipment funded directly from the DIRISA ILIFU grant as well as various institutional / user-supplied contributions. These include the substantial contributions to the ILIFU pool of the IDIA computing nodes and also computing resources from a UCT bioinformatics grant from the US. This document provides the high level policy for resource allocation of such "user-supplied" equipment.

### *Policy*

User-supplied equipment will become part of the common pool of resources available to ILIFU approved projects. The monetary value of the equipment comprising the ILIFU cluster will be used to determine the share of resource allocation of the cluster and applied according to Fair-share task scheduling approaches which seek to ensure that **users get their fair share of machine resources as measured over a long period of time**. Here "long" will be taken as a period of a month and resource utilisation would, in the first instance, typically be focused on

ilifu

# Relative Equipment Contributions (2018) - unratified



# Access / Resource Allocation

- Computing Resource Allocation Committee recommends allocations to Facility Director (but is bound by the User-supplied Equipment Resource Allocation Policy)
- Facility targets Astronomy and Bioinformatics research
- Project calls to support researchers at ilifu Consortium members
- CBIO and IDIA sub allocations managed within those groups
- IDIA considering "Researcher Programmes" modest allocation
- When running jobs on system, allocate to specific project



# Fairshare

Users get their fair share of resources as measured over a period of ~ 1 month.

Implication:

With a small resource allocation you could still request and get most of the machine resources, but for a short period.

# Applying for Access

- Two ways to get access for now:
  - a. Belong to an Approved Project (with approval of project lead e.g. IDIA approved projects)
  - b. Limited duration and scope access for faculty researchers from ilifu Consortium members (and their students)
- In future, respond to calls for ilifu projects
  
- Apply for user access using form linked at [docs.ilifu.ac.za](https://docs.ilifu.ac.za)

# User Support

- User documentation: docs.ilifu.ac.za (site will grow)
- Support ticket email address: support@ilifu.ac.za
- Also a Slack channel (not a formal support mechanism)

## Ilifu User Documentation

### About

What is Ilifu?

### Access

[Requesting time on the Ilifu Cluster](#)

### Cluster

Running jobs on the cluster

Supported software environments

Openstack flavours

### Help and Info

## Requesting Time

Ilifu may be accessed by faculty and researchers from the partner institutions. Time on the cluster is allocated via the Computing Resource Allocation Committee which makes recommendations to the Facility Director.

At present the facility is in a phase of Early User Testing where limited access is being granted to a pool of shared risk users.

The webform for requesting access to the facility is [available here](#)

Queries about access can be directed to [support@ilifu.ac.za](mailto:support@ilifu.ac.za).

The logo for ilifu, consisting of the lowercase letters 'ilifu' in a bold, blue, sans-serif font.